

St. Catherines Road, Broxbourne, EN10 7LD

Westwood Leber are delighted to bring to the market this stunning six bedroom detached Victorian house set in extensive gardens on St. Catherines Road, Broxbourne. Internally, the property boasts over 4000 sq. ft. of accommodation which beautifully combines charming period features with modern extensions and improvements. The property has been thoughtfully maintained, inside and out, including brand new engineered timber-framed windows and modernised heating and electrics throughout.

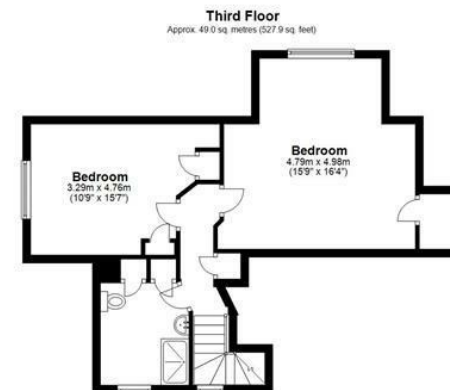
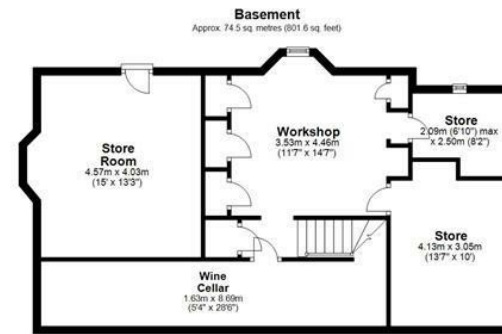
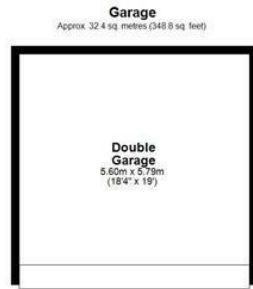
Externally this fabulous home benefits from highly secluded, meticulously landscaped gardens that wrap round the property, providing a picturesque setting with lush green lawns, mature trees and an attractive patio area, perfect for hosting gatherings. The property is accessed via an electric gated entrance which leads through to a large driveway with a detached double garage and with its close proximity to Broxbourne Rail Station, this home offers the perfect blend of grandeur and convenience.

St. Catherines Road is a much sought-after address in Broxbourne, known for its tranquil yet convenient location. Aside from the easy station access, providing direct links to London and other major cities, residents are also minutes walk from the beautiful Lea Valley Regional Park, a spectacular setting for walking, fitness and leisure activities. The area is well-served by reputable schools and local amenities, offering a truly idyllic lifestyle for families and professionals alike.



 WESTWOODLEBER

 WESTWOODLEBER
LET US GUIDE YOU HOME



Total area: approx. 386.3 sq. metres (4158.1 sq. feet)

FOR ILLUSTRATIVE PURPOSES ONLY. NOT TO SCALE. Whilst every attempt had been made to ensure the accuracy of the floor plan shown, all measurements, positioning, fixtures, features, fittings and any other data shown are an approximate interpretation for illustrative purposes only and are not to scale. No responsibility is taken for any error, omission, mis-statement or use of data shown. Property marketing provided by Westwood Leber. Plan produced using PlanUp.









WESTWOODLEBER



WESTWOODLEBER



WESTWOODLEBER



WESTWOODLEBER









